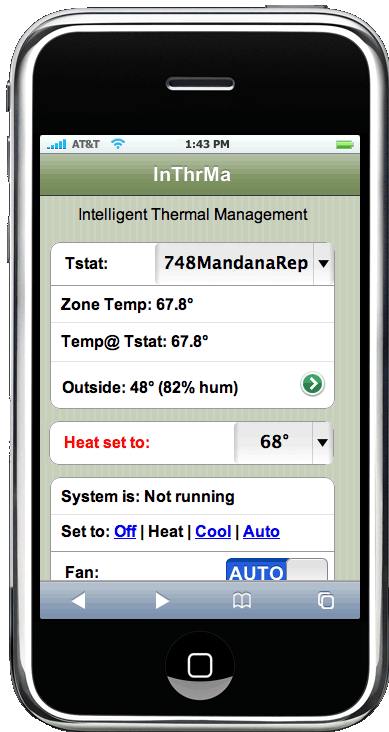


# InThrMa – Intelligent Thermal Management



Manage your HVAC with InThrMa from your phone or laptop.  
Anywhere, Anytime!

Efficiency, feedback & control have long been missing elements in HVAC.

With InThrMa.com your HVAC just got a much needed **upgrade!**



InThrMa // Oakland, CA

[info@inthrma.com](mailto:info@inthrma.com) // 510.256.0258

HVAC 2.0 is here:



+

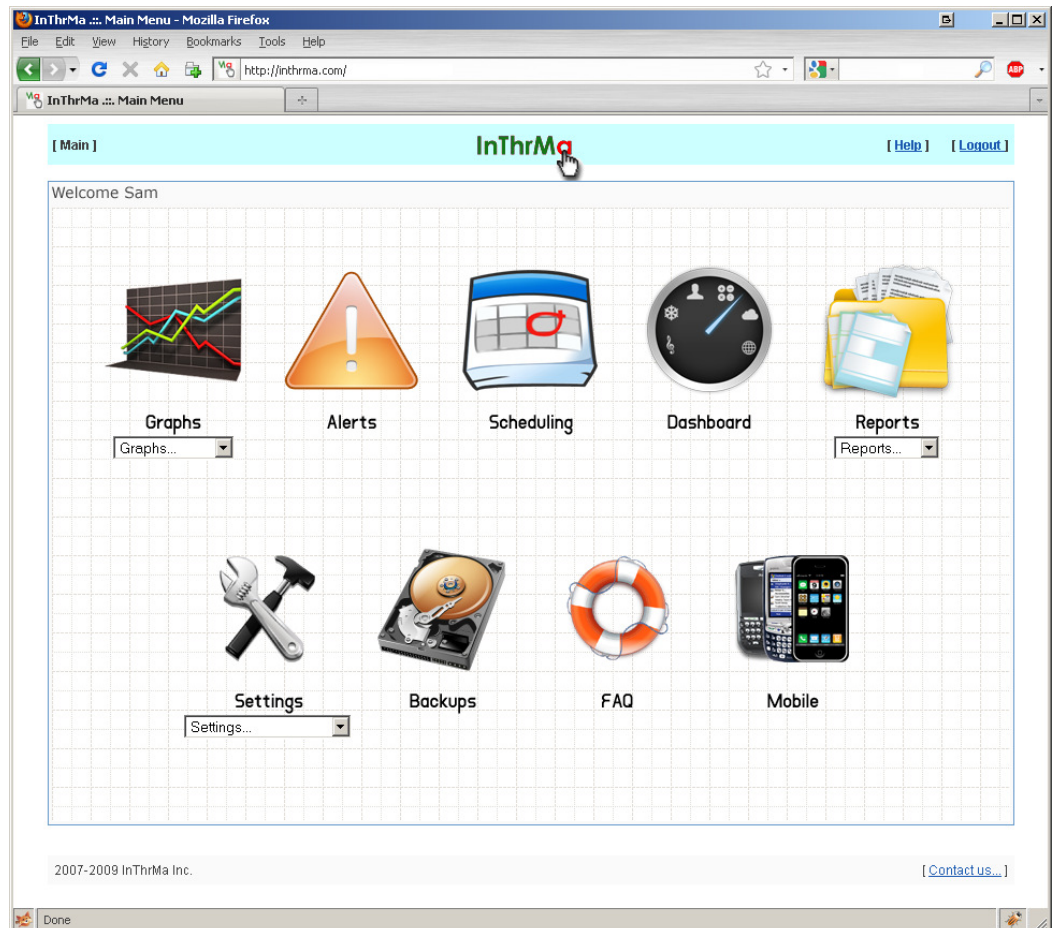


+

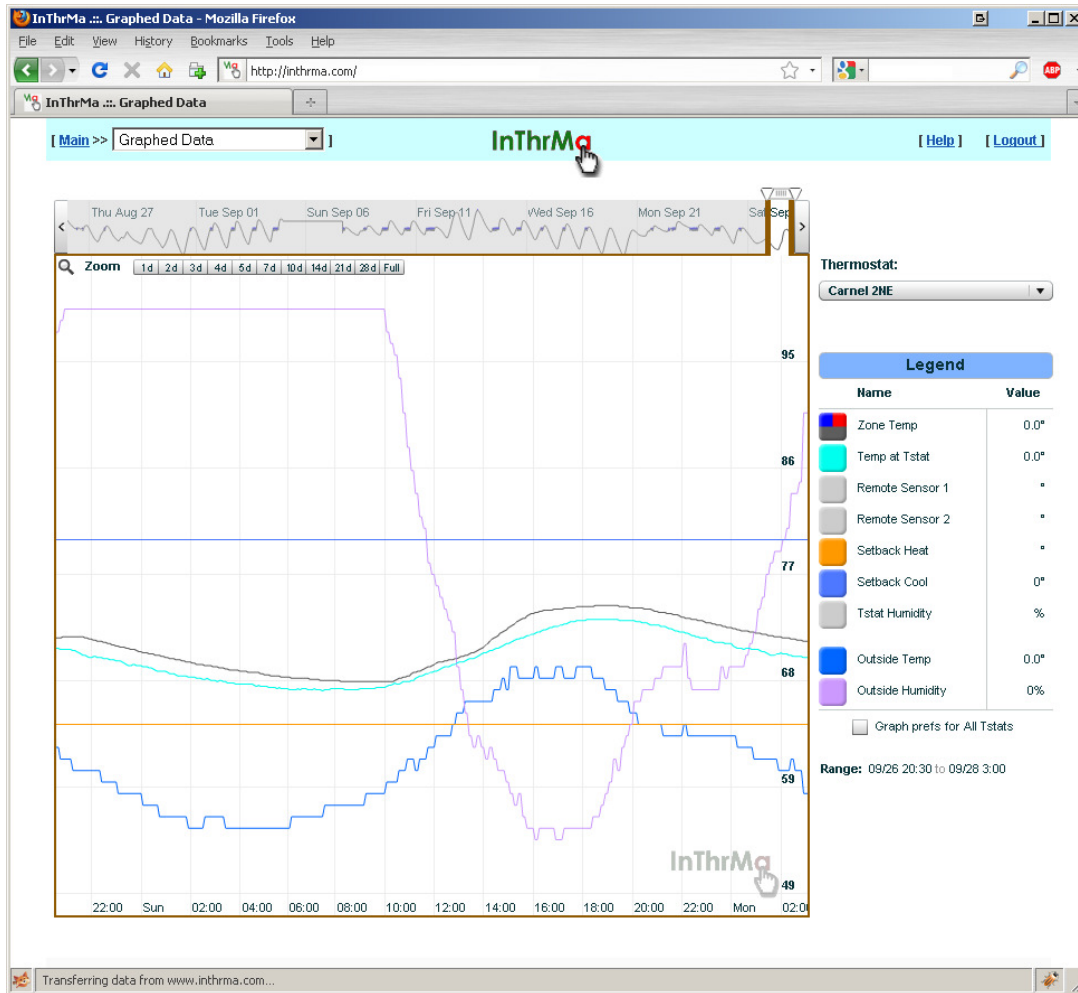


=

Plug-n-Play  
Web based HVAC



# Visualize Energy & HVAC Use



Enable	Name / Loc	Model	Last Seen	Zone Temp	Tstat Temp (Hum)	RS 1	RS 2	Outside Temp/Hum	State	Mode	Setback Heat	Setback Cool	SB Status	Hold Dur
<input type="checkbox"/>	Carnel 2NE / 4807E	NT120 v3.0.5	2009-09-28 03:11	71.2°	69.9°	69.6° Suite 204	71.2° Suite 200	57° / 98%	Not running	Heat	60°	60°	Normal	30
<input type="checkbox"/>	Carnel NW / 4807E	NT20 v3.0.5	2009-09-28 03:11	71.0°	71.0°	72.3° Suite 209	Rs 2	57° / 96%	Not running	Cool	60°	60°	Normal	30
<input type="checkbox"/>	Clearwater / 48080	NT10 v3.0.5	2009-09-28 03:11	68.0°	68.0°			58° / 95%	Not running	Heat	60°	60°	Normal	30
<input type="checkbox"/>	Sarbanvale / 48331	NT20 v3.0.5	2009-09-28 03:11	72.5°	72.5°	56.1° Outside Temp	68.0° Room	58° / 92%	Not running	Heat	72°	74°	Normal	30
<input checked="" type="checkbox"/>	Wesford / 34109	NT150 v3.0.5	2009-09-28 03:11	82.9°	82.9° (50%)	80.9° Misc. Crew	Rs 2	77° / 91%	Not running	Cool	60°	82°	Normal Perm	30

MASTER Control for ALL thermostats listed above!

Start Time	End Time	Duration (min)	Start Temp	End Temp	Delta	Setback	Rate (%/min)	Outside Temp	Outside Hum
2009-03-14 18:14:10	2009-03-14 18:20:07	7	69.0°	70.0°	1°	70.0°	0.140	53°	70%
2009-03-14 17:21:06	2009-03-14 17:28:09	8	69.0°	70.4°	1.4°	70.0°	0.180	54°	67%
2009-03-14 17:02:08	2009-03-14 17:08:10	7	67.8°	69.1°	1.3°	69.0°	0.190	54°	64%
2009-03-14 00:29:12	2009-03-14 00:34:11	6	68.0°	68.7°	0.7°	69.0°	0.120	50°	80%
2009-03-13 21:34:12	2009-03-13 21:40:12	7	69.0°	70.4°	1.6°	70.0°	0.200	50°	82%
2009-03-13 07:03:12	2009-03-13 07:08:15	6	68.0°	69.6°	1.6°	69.0°	0.200	50°	83%
2009-03-13 07:01:12	2009-03-13 07:07:11	7	68.0°	69.1°	1.1°	69.0°	0.160	50°	84%
2009-03-13 05:46:14	2009-03-13 05:48:20	9	67.5°	68.3°	0.4°	69.0°	0.040	50°	85%
2009-03-13 05:13:13	2009-03-13 05:32:20	19	64.4°	69.4°	5°	69.0°	0.260	25°	43%
2009-03-12 22:50:14	2009-03-12 22:56:14	7	69.0°	70.4°	1.4°	70.0°	0.200	50°	87%
2009-03-12 22:19:12	2009-03-12 22:26:12	8	69.0°	70.5°	1.5°	70.0°	0.190	50°	87%
2009-03-12 21:54:13	2009-03-12 22:00:12	7	69.0°	70.2°	1.2°	70.0°	0.170	51°	86%
2009-03-12 21:27:14	2009-03-12 21:38:13	12	68.7°	70.2°	1.5°	70.0°	0.130	52°	85%
2009-03-12 21:11:13	2009-03-12 21:18:13	8	68.0°	69.1°	1.1°	69.0°	0.140	52°	83%
2009-03-12 20:40:15	2009-03-12 20:46:15	7	69.0°	70.4°	1.4°	70.0°	0.190	52°	82%
2009-03-05 08:34:13	2009-03-05 08:40:15	7	68.0°	68.7°	0.7°	69.0°	0.100	49°	86%
2009-03-05 08:12:14	2009-03-05 08:22:12	11	67.6°	69.0°	1.4°	69.0°	0.130	47°	89%
2009-03-05 07:58:15	2009-03-05 08:06:14	9	66.0°	67.7°	1.7°	67.0°	0.190	47°	90%
2009-03-05 07:36:12	2009-03-05 07:44:11	9	66.1°	67.4°	1.3°	67.0°	0.140	47°	91%
2009-03-05 07:13:12	2009-03-05 07:25:13	9	65.9°	67.1°	1.2°	67.0°	0.130	46°	91%
2009-03-05 06:46:15	2009-03-05 07:08:16	23	62.5°	67.1°	4.6°	67.0°	0.200	46°	91%
2009-03-05 06:28:13	2009-03-05 06:33:11	6	61.0°	62.0°	1°	62.0°	0.170	45°	95%
2009-03-04 19:55:16	2009-03-04 20:02:14	8	67.0°	68.5°	1.5°	68.0°	0.190	51°	71%
2009-03-04 18:39:14	2009-03-04 18:46:12	8	67.0°	68.5°	1.5°	68.0°	0.190	52°	64%
2009-03-04 17:46:13	2009-03-04 17:54:15	9	66.6°	68.9°	2.3°	68.0°	0.260	53°	65%
2009-03-04 06:37:13	2009-03-04 06:43:13	7	69.0°	70.0°	1°	70.0°	0.140	46°	90%
2009-03-04 06:13:14	2009-03-04 06:18:14	7	69.0°	70.1°	1.1°	70.0°	0.160	46°	84%
2009-03-04 05:46:13	2009-03-04 05:52:12	7	69.0°	70.2°	1.2°	70.0°	0.170	46°	87%
2009-03-04 05:16:11	2009-03-04 05:24:13	9	69.0°	70.3°	1.3°	70.0°	0.190	45°	90%
2009-03-04 04:53:13	2009-03-04 04:59:13	7	69.0°	70.0°	1°	70.0°	0.140	45°	93%

InThrMa - Data & Tools For HVAC Visibility, Control & Efficiency.